

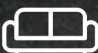
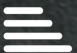


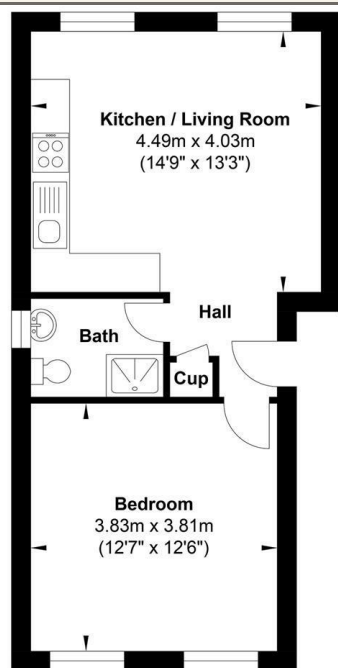
ASHTON  WHITE
Leading the way home

41 Portman Drive, Billericay, Essex, CM12 0PE
£210,000

 1  1  1  D

41 Portman Drive, Billericay, Essex, CM12 0PE

An exceptional re-modelled and updated one bedroom first floor maisonette, located on the popular Queens Park in Billericay. From the hallway you open into an open-plan living room/kitchen with integrated appliances. The modern fitted shower room is stylishly fitted with integrated storage, and the large double bedroom offers ample space. In recent years new windows and a new electric heating system have been installed along with a full redecoration programme.



Gross Internal Floor Area : 39.24 m2 ... 422.37 ft2

Whilst every attempt has been made to ensure the accuracy of the floor plan contained here, measurements of doors, windows, rooms and any other items are approximate and no responsibility is taken for any error, omission, or mis-statement. This plan is for illustrative purposes only and should be used as such by any prospective purchaser. The services, systems and appliances shown have not been tested and no guarantee as to their operability or efficiency can be given.

VIEWING: Strictly by prior arrangement with Ashton White Estate Agents.

THESE PARTICULARS DO NOT CONSTITUTE ANY OFFER OF CONTRACT EITHER DIRECT OR COLLATERAL NOR ARE THEY TO BE ACTED UPON AS REPRESENTATIONS. ALL INTERESTED PARTIES MUST THEMSELVES VERIFY THE ACCURACY OF THESE PARTICULARS.



- ONE BEDROOM FIRST FLOOR MAISONETTE
- OPEN-PLAN LIVING ROOM/KITCHEN
- LARGE DOUBLE BEDROOM
- WELL-PRESENTED THROUGHOUT
- ALLOCATED PARKING SPACE
- RE-MODELLED AND RENOVATED
- MODERN SHOWER ROOM WITH INTEGRATED STORAGE
- MODERN DOUBLE GLAZING AND ELECTRIC HEATING SYSTEM
- LONG LEASE
- CLOSE TO LOCAL SHOPS INCLUDING ALDI SUPERMARKET



**140 High Street
Billericay
Essex
CM12 9DF
01277 659002
admin@ashtonwhite.co.uk
<https://www.ashtonwhite.co.uk>**